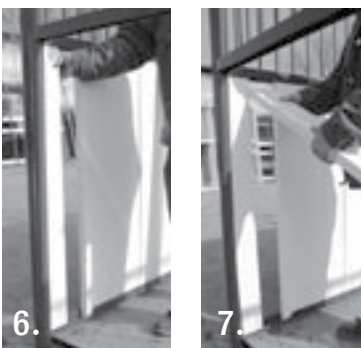
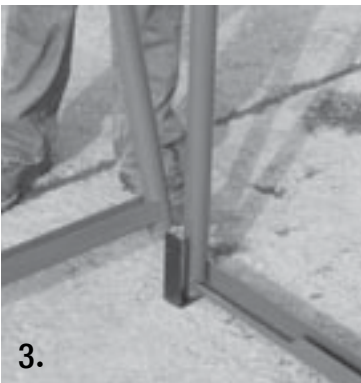
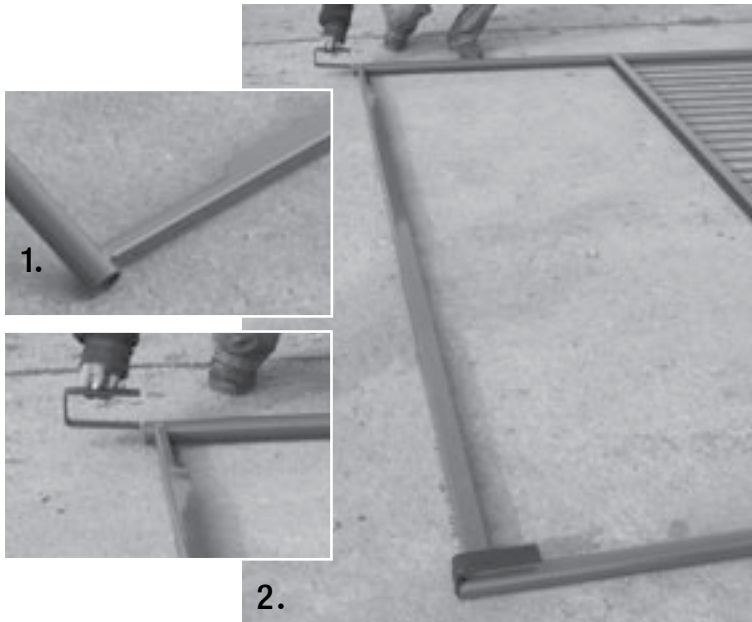


12' x 12' Premium Horse Stall

Assembly & Installation Instructions



1. Setting up the frame: Each metal framed stall panel has a notch at the bottom which allows the insertion of 2x material. It is important that the notched side of the back panel and two sides panel face inward. The front door panel notch should face out.
2. Lay the panel to be used as the rear panel on the ground with notch facing up. While it is on the ground, insert a connector on both the right and left sides of the panel bottom.
3. Carefully stand back panel up. While holding the back panel at a right angle straight up, have a helper lower a side panel so the tube forming the back rail slips over the connector. Make sure to put another connector on the bottom of each side panel facing the front so it is ready for the front door panel.
4. While holding the side panel tightly in place, slip a top connector into place so that each of the two legs of the connector are inserted into the two respective tubes of the back and side panel. Repeat this step with the other side panel, lowering it over the bottom connector before dropping the top connector into place.
5. When all three sides are firmly in place, lift the front panel with sliding door facing outward, over each of the two bottom connectors from the two side panels. When both bottom connectors are in their tubes, insert the two top connectors to firmly anchor the stall front. Your unit is now set up and ready for filler material.

6. Lumber: The stall can be set up using any 2x lumber. Using 2" x 6" is the most common. Below is the lumber required to fill all 4 stall sides.

94 - 2" X 6" X 47"

4 - 2" X 6" X 36"

1 - 2" X 2 1/2" X 47"

1 - 2" X 3" X 36"

1 - 2" X 2" X 47"

7. Each stall side requires twenty-five (25) planks that are 2" X 6" X 47". Insert the twenty-five (25) 2" X 6" X 47" planks into the notch in the slotted frame and slide to the opposite end of the panel. This will leave one final slot for the final 2" X 6" X 47" plank. Your side should be complete. Repeat these steps for the other two stall sides.

12' x 12' Premium Horse Stall



8. To install lumber in the stall fronts, you must first remove the sliding door and set it aside. To remove door, simply lift door straight up off top rail. Then, begin the installation by installing the lumber in the door first.
 - a. **To install lumber in the door**, install eight (8) 2" X 6" X 47" planks in the door and then one (1) 2" X 2" X 47" planks. This should complete the door panel.
 - b. **To install the lumber in the rest of the front panel**, install the 2" X 3" X 36" plank, followed by four (4) 2" X 6" X 36" planks. Then, insert eleven (11) 2" X 6" X 47" planks and one (1) 2" X 2-1/2" X 47" to complete the panel.
9. To reinstall door, first set bottom of door inside protruding track guide. Then, lift door straight up and hang rollers on top rail.



Hay and Grain Feeder Option:

10. Installing Hay and Grain Feeder: Cut zip tie to open poly hay and grain feeder door. Remove bolts on the feeder (9/16" socket or wrench required).
11. Raise feeder and place bolts through mounting holes on the feeder door. Put all four nuts on before tightening. Turn door and check for clearance, making any necessary adjustments, then tighten nuts.

